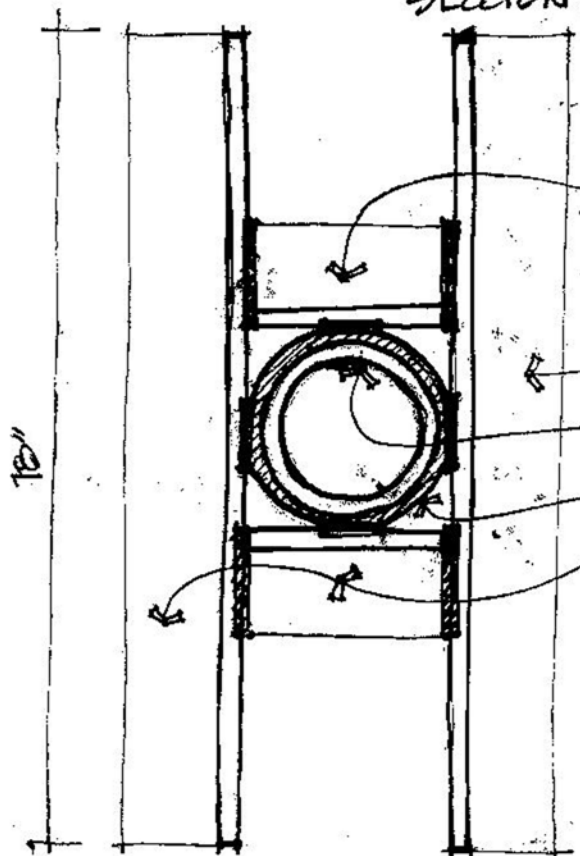
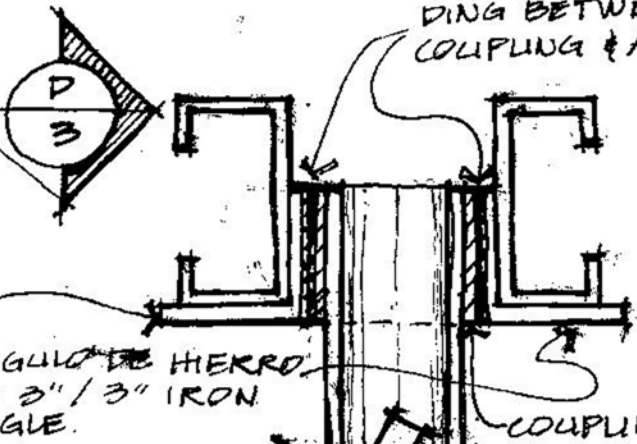


P 1
 PROFILE VIEW
 VISTA LATERAL

SOLDADURA ENTRE COUPLING Y ANGULO / WELDING BETWEEN COUPLING & ANGLE

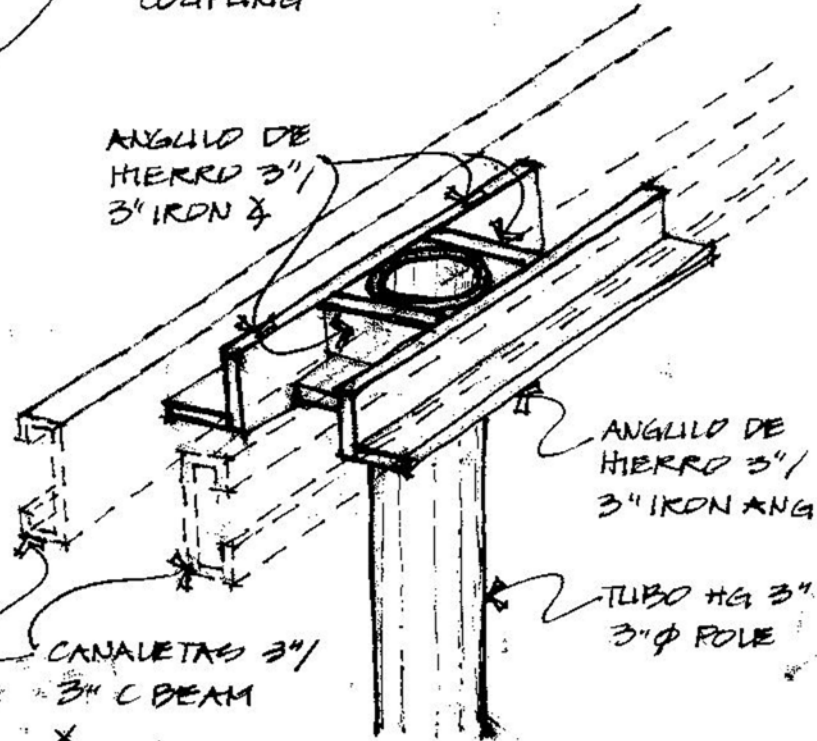
P 3
 SIDE SECTION
 SECCION LATERAL



TUBO HG 3" / 3" ϕ POLE COUPLING

ANGULO DE HIERRO 3" / 3" IRON \angle

PUNTOS DE SOLDADURA / WELDING POINTS.



P 2
 VIEW FROM ABOVE
 VISTA SUPERIOR

P 4
 3D VIEW
 VISTA TRIDIMENSIONAL